



Project Management Institute  
Michigan Thumb Chapter

Volume 9, Issue 3

This Newsletter Issued Quarterly

April 2003

## Thumbprint! *Meet Caroline Robison*



**PMI Member Since:** June 2001

**PMP:** November 2001

**Employer:** Electronic Data Systems (EDS) – Enterprise Deployment

**Job Description:** Project Manager – Inventory Process Leader

As Inventory Process Leader I am responsible for the following:

- Clarifying and defining Contract requirements and determining if there are processes to support those requirements
- Work extensively with ISO certification requirements to control and maintain processes
- Work directly with the customer to develop and define joint processes to support current contract requirements.

**Best Project Advice Ever Received:** Document, document document – VERY clearly and specifically

**Your Secret to Effective Project Management:** Follow a methodology and document all steps throughout each project management phase.

**Recommended Reading for Project Managers:** Since I am currently studying for my PMP certification, I would recommend Rita Mulcahy's PMP Exam Prep 4<sup>th</sup> edition

**Trivia:** Disney's **EPCOT** originally stood for - **Experimental Prototype Community of Tomorrow**.

**By:** Caroline Robison

## Message from the Chapter President

**Tom Bartholomew**

WOW!! Our year is quickly coming to an end and when I look back on what we have been able to accomplish as a board with the support of our membership two words come to mind. Thank You!!

And, there is more to come! We have great year ending events coming in May. Starting with the election of new officers, including Chapter President. Then ending our year with our final kickoff to summer, which we plan to make an annual event, the golf outing.

We already have some great ideas for next year that we will be working on this summer with a fresh new board and re-energized spirit.

Thanks for your support in helping us make this a great year with promises of much more to come.

Tom Bartholomew

Attention all members:

It is time to take nominations for the PMI Michigan Thumb Chapter Board of Directors. All nominees must agree to serve if elected and must be members in good standing at the time of nomination. Term of office is 15 months from June 1 through August 31. All the following positions are available, except that you must have served as a board member to run for the office of President.

President  
Senior Vice-President  
Vice-President Comptroller  
Vice-President Communications  
Vice-President Publications  
Vice President Education/Certification  
Vice-President Marketing

If you are interested in running for a board position please contact Randy Swiantek, PMP at [randy.swiantek@eds.com](mailto:randy.swiantek@eds.com) by 5:00 P.M. Wednesday April 9, 2003.

Don't forget to check out our **new web site** at:

<http://chapter.pmi.org/michthumb/>

Or email us at:

[pmi\\_michiganthumb@yahoo.com](mailto:pmi_michiganthumb@yahoo.com)



Project Management Institute  
Michigan Thumb Chapter

Volume 9, Issue 3

Newsletter Editor: Caroline Robison: [caroline.robison@eds.com](mailto:caroline.robison@eds.com)

April 2003

## NEWS FOR HQ

**Improve your leadership skills!** Don't miss the exciting learning and leadership development opportunities available to you through the PMI Leadership Institute. The Leadership Institute is a unique program that offers its students the opportunity to participate with a small group of individuals in active learning sessions and skill building activities. Participants in the Leadership Institute are goal setters - and goal achievers! They gain valuable knowledge and feedback through personal development planning, peer networking, active discussion and mentoring. For more information on how you can become a participant in the PMI Leadership Institute, we encourage you to visit the PMI Web site at your earliest convenience at [http://www.pmi.org/info/GMC\\_LeadershipInstFile.asp](http://www.pmi.org/info/GMC_LeadershipInstFile.asp). The deadline for application to the Leadership Institute Class 2004 is 31 March 2003. ([anne.jenemann@pmi.org](mailto:anne.jenemann@pmi.org))

### Important Information for Project Management Professionals

To offset rising administrative costs, PMI will be reinstating the processing fee for Project Management Professional (PMP<sup>®</sup>) certification renewal effective 1 January 2004. The fee will be \$75.00 (US) for PMI members and \$150.00 (US) for non-members.

The fee, to be submitted with the Application for Certification Renewal, will be applicable during each Continuing Certification Requirements (CCR) cycle. This application is sent to PMPs after they have completed and submitted the required Professional Development Units (PDUs) for their renewal. **Please note:** All Applications for Certification Renewal sent to PMPs on or after 1 January 2004 will require the inclusion of the processing fee. If a PMP is sent the application prior to 1 January 2004 and returns it after the implementation date of the processing fee, he/she will not be required to submit payment with their application.

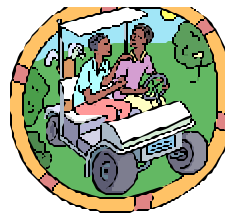
Information regarding this fee will be included in an upcoming issue of *PMI Today*<sup>®</sup>, a future revision of the CCR handbook, and the certification section of PMI's web site ([www.pmi.org](http://www.pmi.org)). Questions regarding PMI's Certifications and Continuing Certification Requirements can be directed to the PMI Certification department at +1-610-356-4600 or [pmihq@pmi.org](mailto:pmihq@pmi.org).

## VOLUNTEER OPPORTUNITIES

*If you are interested in earning PDU's by participating in chapter event committees or providing articles for the news letter, , please contact me by email:*

[caroline.robison@eds.com](mailto:caroline.robison@eds.com) or by snail mail: Caroline Robison, 7260 Forest Road, Unionville, MI 48767.

# Reminder!!



**Registration Deadline is drawing near!!**

**Vorder!!!** What is Vorder, well it is German for FORE!! And we all know what that means. Break out your clubs and dust them off, and find your shoes, a golf outing is being planned for this spring.

Yes, I know it is January and the weather outside is cold and dreary, but the PMI Thumb Chapter is planning ahead. On Saturday, May 10, 2003 the chapter will be hosting a golf outing at the Fortress in Frankenmuth, Michigan. The outing will be a scramble format, which will give you a lot of time to network with your friends, with a shotgun start at 9:00 am.

Of course you can't go to Frankenmuth without eating chicken, so we will also include a barbecue dinner at the golf course consisting of chicken, spareribs and bratwurst, along with the other delectable items usually found at a barbecue.

The cost for all this fun will be \$70.00, which includes: 18 holes of golf, cart, your meal and various prizes to be awarded at dinner. The event will be open to anyone, not just members of the chapter or PMI, so invite your friends or bring your family.

Stay tuned into the chapter web site for additional details in the coming weeks. You can also contact Jim Donovan at (810) 606-2731 or [jim.Donovan@eds.com](mailto:jim.Donovan@eds.com) if you have any questions or would like to volunteer to be on the Golf Outing Committee.